

PLANT LOOK-ALIKES

Giant Hogweed and Commonly Mistaken Plants in the Fraser Valley

HEIGHT



GIANT HOGWEED

Heracleum mantegazzianum

INVASIVE, TOXIC

- **Very Tall!** Up to 5 m
- Flowers **late June/July**
- **Toxic sap can cause burns, blisters, and scarring. All plant parts are toxic**



COW PARSNIP

Heracleum maximum

NATIVE

- Can grow to 2 m
- Flowers **early June**
- **Can cause skin irritation**



POISON HEMLOCK

Conium maculatum

INVASIVE, TOXIC

- Can grow up to 1.8 m
- Flowers **April/May**
- **Toxic sap can cause burns, blisters, and scarring. All plant parts are toxic**



WILD CHERVIL

Anthriscus sylvestris

INVASIVE

- Grows up to 1.5 m tall
- Flowers **April/May**



WATER HEMLOCK

Cicuta maculata

NATIVE, TOXIC

- Grows approx. 1 m tall
- Flowers **late June/July**
- **Roots are thickened, tuberous and bulbous**
- **Toxic sap can cause burns, blisters, and scarring. All plant parts are toxic**



QUEEN ANNE'S LACE

Daucus carota

INVASIVE

- Grows approx. 1 m tall
- Flowers **August/September**
- **Can cause skin irritation**

LEAVES



- Deeply serrated leaf edges
- Leaves can be up to 1 m wide
- Stiff hairs on undersides



- Shape is similar to a maple leaves
- Covered in soft hairs



- Triangular shaped fern-like leaves



- Triangular shaped fern-like leaves, covered in soft hairs
- Leaf stems have mid-groove (C-shaped cross-section)



- Separated leaflets
- Stiff hairs on undersides of leaves



- Triangular shaped fern-like leaves
- Covered in soft hairs

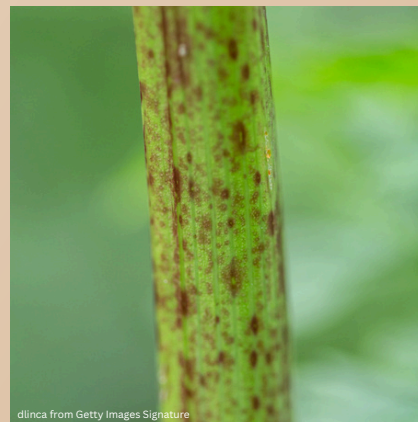
STEMS



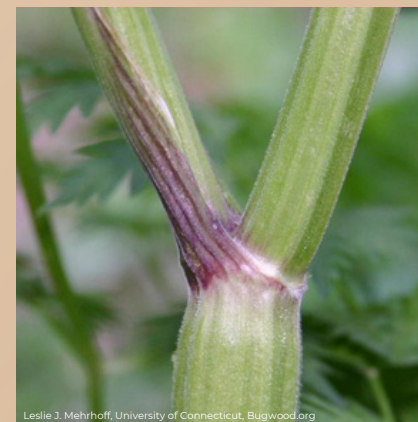
- Reddish or purple blotches along stems
- Stiff white hairs



- Green stem, less conspicuous reddish or purple spots
- Stems with ridges and fuzzy hairs



- Smooth, hairless stems
- Reddish or purple spots and blotches along stems



- Ribbed stems
- Green stem, sometimes with purple at joints, but never blotchy



- Green stem with reddish or purple lengthwise streaks
- Stiff white hairs



- Green ribbed stem
- Fuzzy hairs on stem

FLOWERS



- Large umbrella-shaped white flower cluster
- Flowerheads can be up to approx. 1.5 m across



- Rounded white flower.
- Flowerheads can be up to approx. 0.5 m across



- Rounded, umbrella-shaped white flower clusters



- Rounded, umbrella-shaped white flower clusters



- Rounded, generally globe-like white flower clusters



- Dense white flower clusters with a flat top, black dot the in center of flowerhead
- Bracts under the flowerhead

REFERENCES

- [Metro Vancouver Best Management Practices - Giant Hogweed](#)
- [Metro Vancouver Best Management Practices - Poison Hemlock](#)
- [Metro Vancouver Best Management Practices - Wild Chervil](#)
- [Capital Region Invasive Species Program - Giant Hogweed](#)

- [Jefferson County Noxious Weed Control Board - Poison Hemlock](#)
- [Oregon Noxious Weed Control Program - Giant Hogweed Comparison](#)
- [King County - Wild Chervil Identification and Control](#)
- [Ontario - Weed Identification Guide for Ontario Crops](#)

- [Nova Scotia - Plants That May Be Mistaken for Giant Hogweed](#)
- [Maine Department of Agriculture - Giant Hogweed Identification](#)
- [Michigan State University - Poison Hemlock Identification and Control](#)
- [Penn State Extension - Is it Poison Hemlock or Wild Chervil?](#)